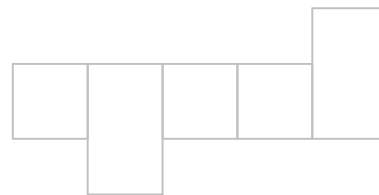
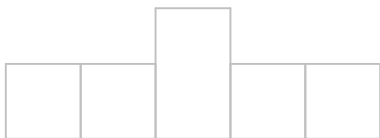
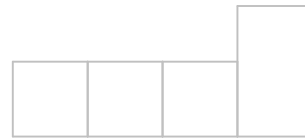
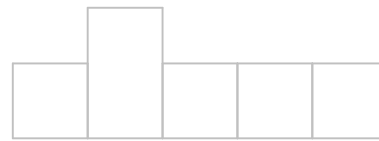
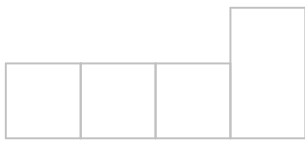
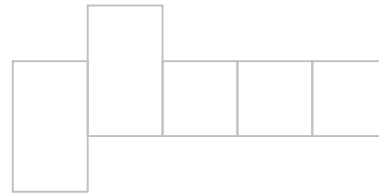
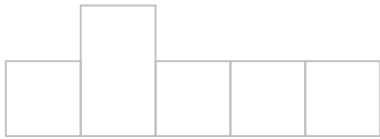


2nd Grade Word Shapes

Grade 2 Spelling Worksheet

Print the words from the list in the empty boxes. The shape of the word must match the shape of the boxes.



A. mess

B. gloss

C. work

D. spark

E. store

F. aunt

G. share

H. zebra

2nd Grade Word Shapes

Grade 2 Spelling Worksheet

Print the words from the list in the empty boxes. The shape of the word must match the shape of the boxes.

s h a r e

g l o s s

w o r k

s t o r e

m e s s

a u n t

z e b r a

s p a r k

A. mess

B. gloss

C. work

D. spark

E. store

F. aunt

G. share

H. zebra