

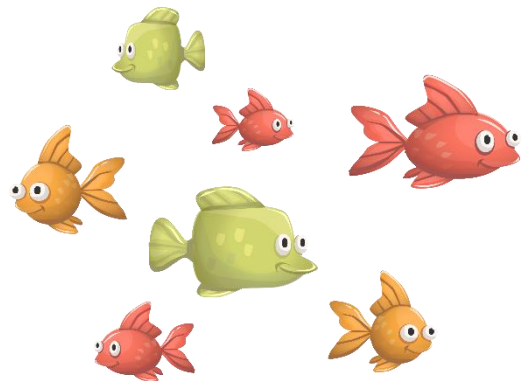
Fraction word problems

Grade 5 Word Problems Worksheets

Read and answer each question:

An aquarium has exhibits that feature different marine animals.

- $\frac{5}{8}$ of the staff are male. $\frac{5}{12}$ of the staff works part time at the aquarium. What fraction of the staff is female?
- The sharks are fed three times a day. During the morning feeding, $\frac{2}{15}$ of a ton of fish is fed. During the afternoon feeding, the weight of fish fed will be $\frac{1}{15}$ of a ton more than the fish fed during the morning. If the total weight of fish fed in a day is $\frac{1}{2}$ of a ton, how much is fed during the feeding at night?
- A baby otter was born $\frac{3}{4}$ of a month early. At birth, its weight was $\frac{7}{8}$ kilograms, which is $\frac{9}{10}$ kilogram less than the average weight of newborn otter in the aquarium. What is the average weight of newborn otter?
- The penguin nursery is open two times a day: $\frac{2}{3}$ hour at noon and $\frac{5}{12}$ hour in the afternoon. How much time is the penguin nursery open every day?
- Two kinds of fish can be found in a small tank that is $5\frac{1}{7}$ feet long. The blue fish is $\frac{2}{15}$ feet long and the orange fish is $\frac{7}{10}$ feet long. How much longer is the orange fish?
- An octopus weighed $\frac{5}{6}$ kilograms. After two weeks, its weight was increased by $\frac{3}{10}$ kilograms. But afterwards, it lost $\frac{1}{5}$ kilograms in weight as it was sick. What is its current weight?



Answers

1. $1 - \frac{5}{8} = \frac{3}{8}$

$\frac{3}{8}$ of the staff are female.

2. $\frac{1}{2} - \left(\frac{2}{15} + \frac{2}{15} + \frac{1}{15}\right) = \frac{1}{2} - \frac{5}{15} = \frac{15}{30} - \frac{10}{30} = \frac{5}{30} = \frac{1}{6}$

$\frac{1}{6}$ ton of fish is fed during the feeding at night.

3. $\frac{7}{8} + \frac{9}{10} = 1\frac{31}{40}$

The average weight of newborn otter is $1\frac{31}{40}$ kilograms.

4. $\frac{2}{3} + \frac{5}{12} = 1\frac{1}{12}$

The penguin nursery opens $1\frac{1}{12}$ hours.

5. $\frac{7}{10} - \frac{2}{15} = \frac{17}{30}$

The orange fish is $\frac{17}{30}$ feet longer than the blue fish.

6. $\frac{5}{6} + \frac{3}{10} - \frac{1}{5} = \frac{14}{15}$

The current weight of the octopus is $\frac{14}{15}$ kilograms.