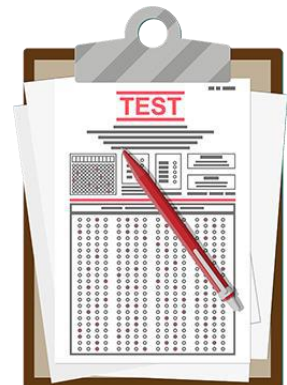


Time (nearest to half an hour)

Grade 2 Word Problems Worksheet

Jenny is going to take the entrance exam to enter college. She is very confident that she will pass the exam.

1. Jenny usually spends 3 and a half hours to review her previous lessons for her college entrance exam. If she started reviewing at 1:30 in the afternoon, when would she finish reviewing?
2. Jenny arrived at the university 30 minutes earlier than the start of the exam. If the first part of the exam starts at 8:00 in the morning, when did Jenny arrive at the school?
3. The exam is 5 hours long. If there was also a one-hour break, when was the exam scheduled to end?



4. The first part of the exam ended at 9:30 in the morning. How long was the first part of the exam?
5. Jenny finished her exam half an hour earlier than the end-time scheduled for the exam. When did Jenny finish the exam?

Answers

1. She would finish reviewing at 5 o'clock in the afternoon.
2. She arrived at 7:30 in the morning.
3. The exam was scheduled to end at 2:00 in the afternoon.
4. The first part of the exam was 1 and a half hours long.
5. Jenny finished her exam at 1:30 in the afternoon.