

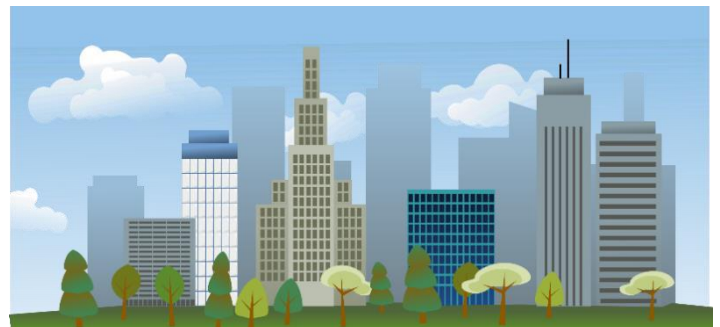
Telling time (whole hours)

Grade 1 Word Problems Worksheet

1. A bakery starts selling bread at 8 o'clock in the morning. It usually takes 2 hours to bake the first batch of bread. At what time does the baker have to start baking in the morning?

2. The library only opens for four hours on Sundays. If it opens at 12 o'clock at noon, at what time does it close?

3. The grocery store opens from 6 o'clock in the morning and closes at 8 o'clock in the afternoon. How long does it open everyday?



-
4. The elevator of an office building was out of order starting from 3 o'clock in the afternoon. It was fixed after 4 hours. When was it fixed?
 5. The pharmacy usually opens at 8 o'clock in the morning. However, due to power failure, it opened 3 hours later than usual on yesterday. What time was it open?

Answers

1. 6 o'clock in the morning
2. 4 o'clock in the afternoon
3. 14 hours
4. 7 o'clock in the evening
5. 11 o'clock in the morning